



GTS-160

PREFORMED SILICONE GLAZING TRANSITION SEAL

Description

ENDURIT GTS-160 is an ultra low modulus elastomeric pre-cured silicone membrane that is used as a transition seal between air and vapor barrier systems and window/curtain wall systems. **ENDURIT GTS-160** is specifically designed to absorb thermal and seismic movement, wind-loading stresses and high shear. The translucent silicone membrane allows the installer to verify the recommended amount of sealant is properly applied and to ensure an effective seal is achieved. The assembly is fully-compatible with most glazing sealants and materials and air and vapor barrier membranes.

Features and Benefits

- ☑ Easy to install transition seal system from liquid and self adhered air and vapor barrier membranes using ENDURIT GTS Sealant
- ☑ Continuous airtight, watertight, and vaportight seal
- ☑ Translucent membrane to ensure proper adhesion
- ☑ Excellent tear resistance
- ☑ High-movement seal capable of +200/-75 percent at transition openings
- ☑ High shear seal capable of handling required live loads, wind sway and seismic movements
- ☑ Long-term, reliable waterproof seal maintains a positive drainage plane
- ☑ Mechanical fastening and termination bars not required

Areas of Application

ENDURIT GTS-160 is a glazing transition assembly designed for sealing air and vapor barrier membranes to adjacent curtain walls, storefronts, or windows. Due to its thin profile **ENDURIT GTS-160** is well suited for irregular window shapes and in areas where repairing or replacing traditional wet sealants would be difficult.

Product Properties

Durometer, Shore A:	50 +/- 5	ASTM D 297
Tensile Strength, psi:	1000	ASTM D 412
Elongation, %:	500	ASTM D 412
Tear, Die B, ppi	150	ASTM D 624
Low Temp. Flex @ -40 ⁰ F	Pass	ASTM D 746

Installation

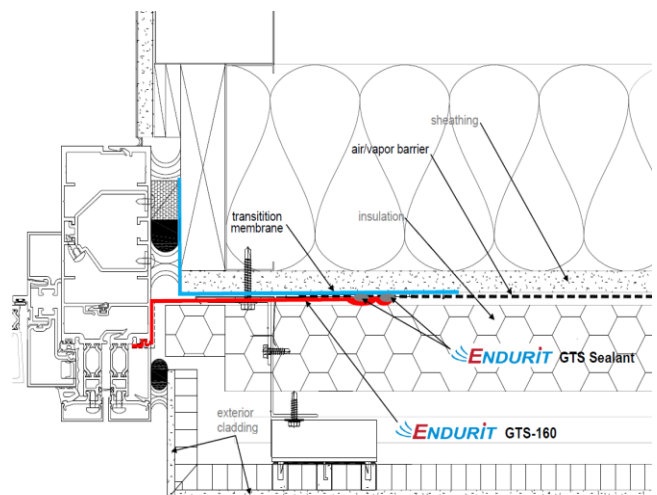
Attaching the **ENDURIT GTS-160** to the building surface or air barrier is accomplished using **ENDURIT GTS Sealant**. Field adhesion testing by “tab or peel adhesion” should be completed prior to installing GTS-160 Silicone Transition Seals on all substrates and system components. Proper adhesion should be confirmed (cohesive failure) before proceeding with GTS-160 installation. Most substrates will not require a primer to achieve proper adhesion.

To install, apply two parallel beads of GTS Sealant of $\frac{3}{8}$ inch to $\frac{5}{8}$ inch in diameter to the building or air barrier surface, and then press the silicone strip to the surface. The compressed bead width should be $\frac{1}{2}$ inch or larger, and it can be visually checked by viewing through the translucent seal.

To ensure both waterproofing and air barrier performance, it is required to install and tool sealant at every GTS-160 lap edge and every lap transition between pieces of the GTS-160 and between lap edges of the air barrier and the GTS-160. A minimum of 3 inches is required on all GTS-160 to air barrier overlaps.

When GTS-160 is to be used on vertical transitions, mechanical fastening may be required on long runs to avoid GTS Sealant from slumping due to the weight of the GTS-160. If any mechanical fasteners are used they should be completely covered with GTS Sealant.

Typical Detail



Compression/wet sealant transition seal

Standard Color

Translucent. Custom colors are available.

Packaging

ENDURIT GTS-160 is available in standard widths of 6", 9" 12"
Custom widths are available.

ENDURIT GTS-160 is packaged in rolls of 100 foot lengths.

Availability

Standard **ENDURIT GTS-160** widths are stocked and can be shipped within 1-3 days business. Call BESSERN Building Products for custom width availability.

Limitations

ENDURIT GTS-160 is not intended for use:

- As a seal to untested substrates.
- With other sealants or bonding agents without approval
- Below-grade applications without approval

Warranty

BESSERN warrants that its product shall be in accordance with the specifications published in the current product data sheet. BESSERN will, in the event any of its products fail to meet their published specifications, replace those products proved to be defective.

BESSERN shall not be responsible for any incidental or consequential damages due to the breach of its warranties. Notwithstanding the foregoing, BESSERN's sole liability hereunder shall not exceed the cost of the defective product originally purchased.

EXCEPT AS SET FORTH ABOVE, *BESSERN* MAKES NO OTHER WARRANTIES EXPRESS OR IMPLIED AND MAKES NO WARRANTY AS TO THE MERCHANTABILITY OR FITNESS OF THE PRODUCT FOR A PARTICULAR PURPOSE. THERE ARE NO WARRANTIES WHICH EXTEND BEYOND THE DESCRIPTION ON THE FACE HEREOF.

The user must determine if the product is suited for the intended use and the user must bear the risks and liabilities associated with it.



www.bessern.com

BESSERN Building Products
1400 North Providence Road, Media PA 19063
Tel: 484-234-5035 • Fax: 484-234-5037